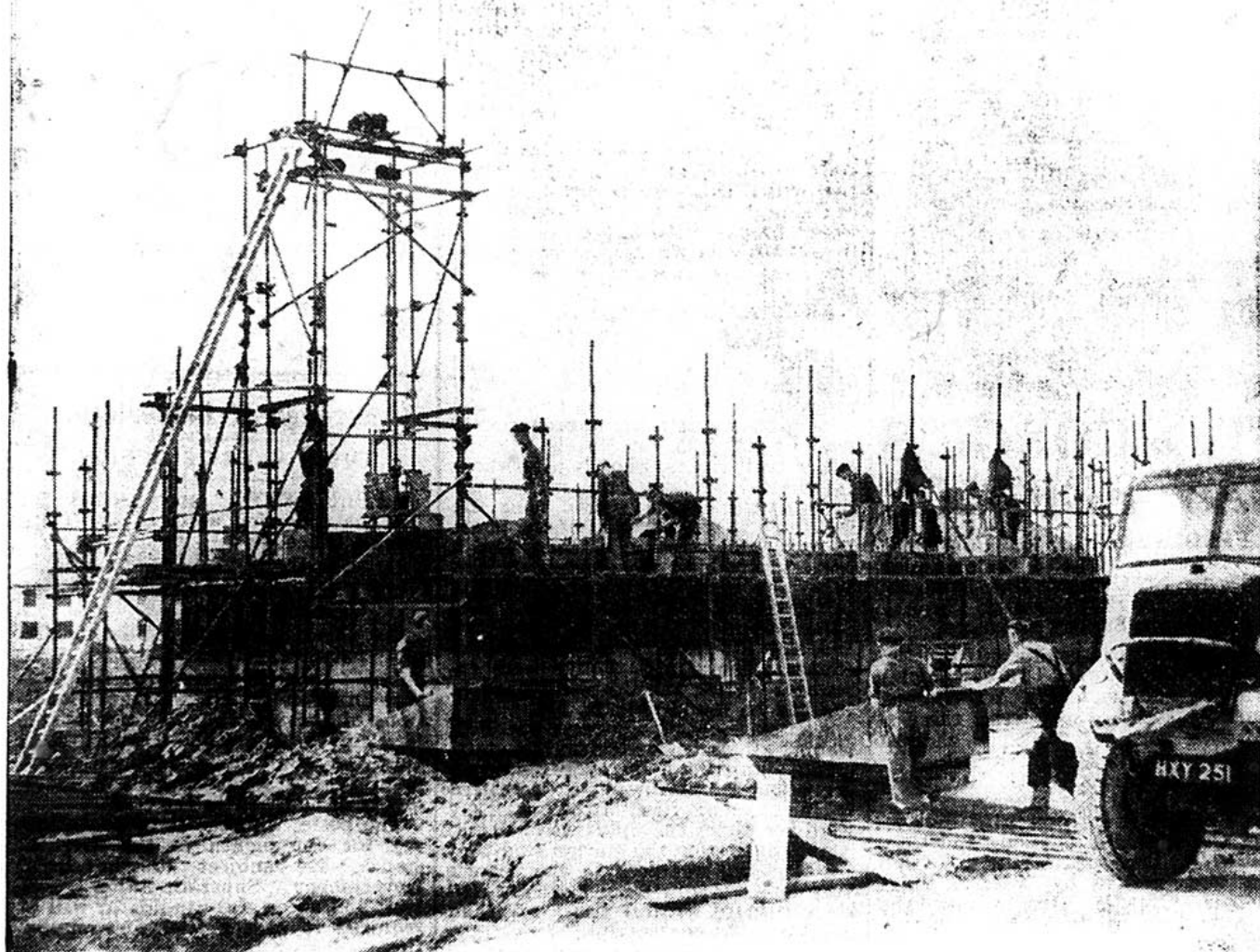


NEW CAMBRIDGE HOUSES AT SPEED



Simplicity and speed is the key-note on the Cambridge Borough Council's Birdwood Road building site, where 156 permanent concrete houses are being erected. Machinery used in the work of construction—like cranes, cement-mixers and lifts for conveying concrete to the scaffolding top—is electrically powered from the Electricity Company's supply. Briefly, the method of erection is this: a concrete foundation is laid and on it a steel case is placed in position. Concrete is poured into this steel "skeleton," and after the mixture has set the case is removed—leaving concrete walls with an air space between. The roofs will be tiled.

Ninety per cent. of the labour, incidentally, is Polish